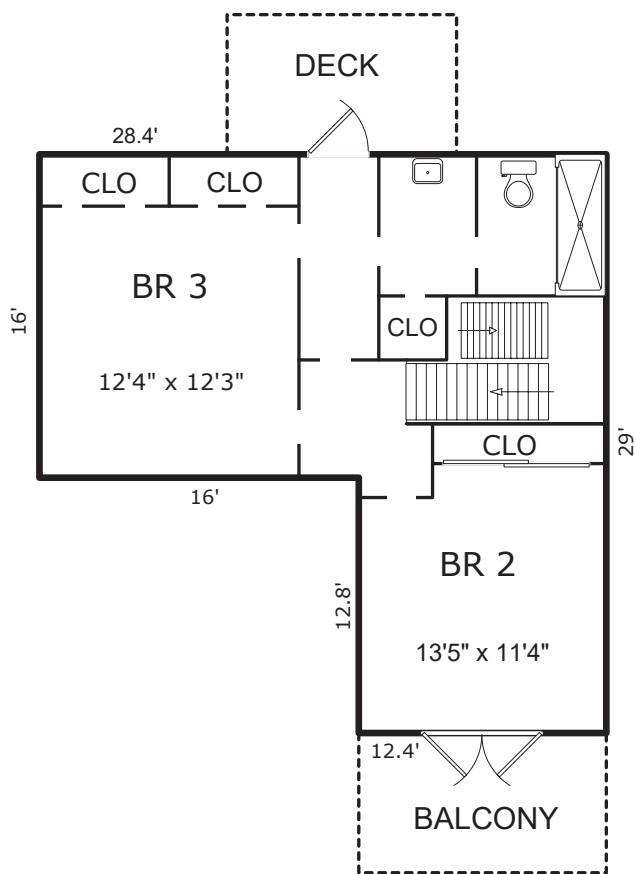


# GUADALUPE 5SE of THIRD, CARMEL, CA 93921

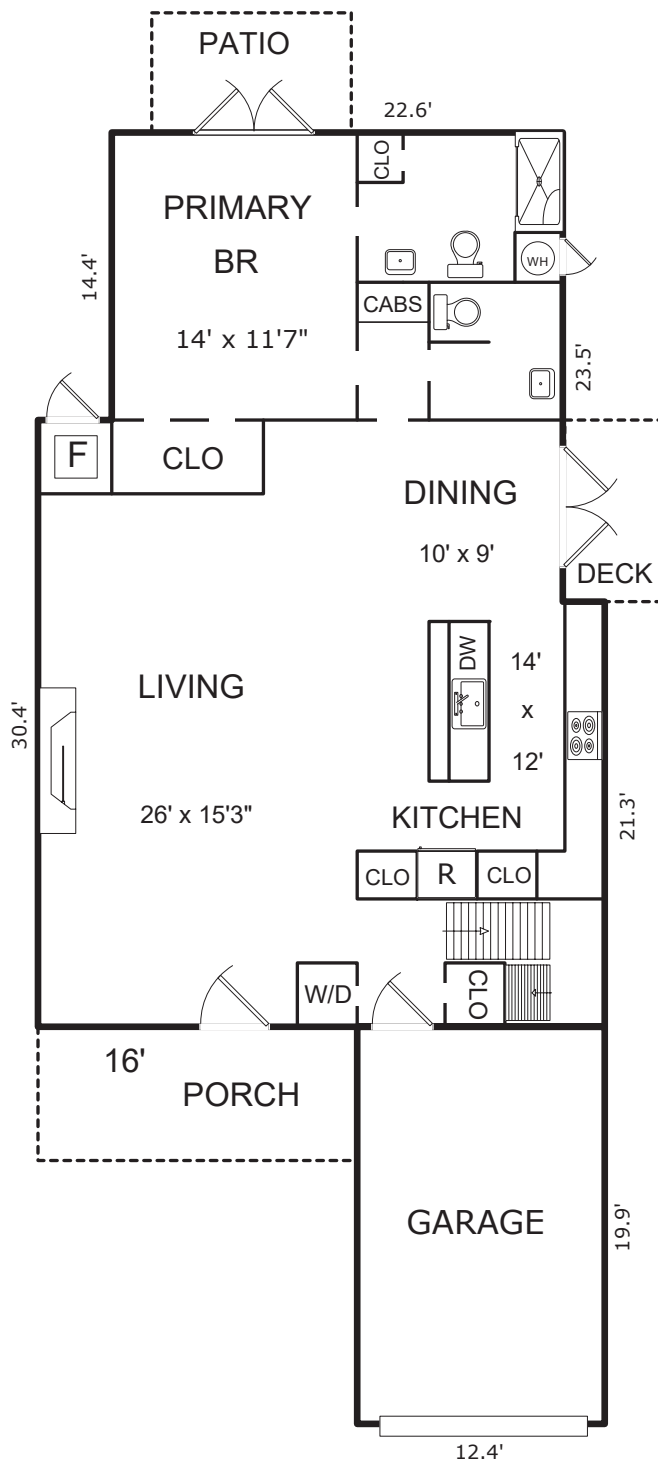
## AREA CALCULATIONS (approximate)

First Floor:	1,170sf
Second Floor:	561
Net Livable Area:	1,731sf

Garage:	247
Patio:	60
Porch:	107
Balcony:	87
Deck:	81
Deck:	45



SECOND FLOOR



FIRST FLOOR